



WETHERBY GARDENS

SOUTH KENSINGTON





A charming and supremely elegant first floor flat benefitting from wonderful proportions and volumes. This gracious flat benefits from a perfectly proportioned south facing drawing room that gives onto a terrace which comfortably seats six.

The bedroom with mullioned windows faces onto communal gardens (to which the flat has access) so is extremely quiet and has a green and leafy aspect. The flat has a feeling of European grace and is in immaculate condition. Wetherby Gardens is in cosmopolitan South Kensington and conveniently located for shops, restaurants and public transport.

Accommodation and Amenities:

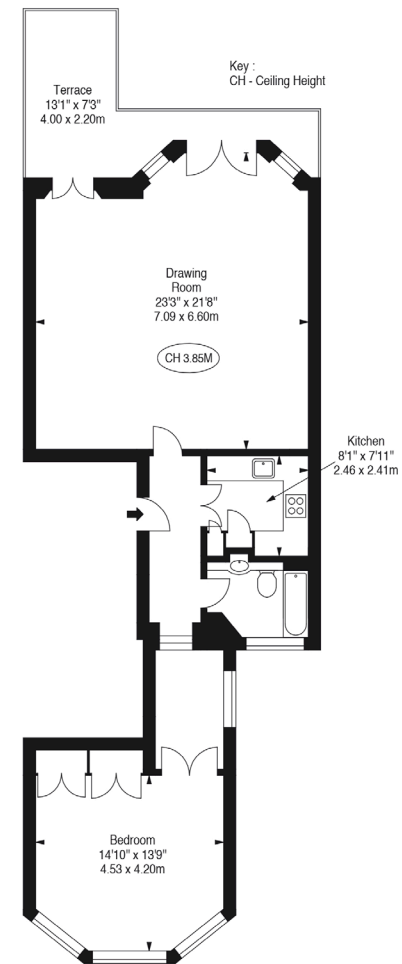
- Drawing Room
- Bedroom
- Bathroom
- Kitchen
- Terrace
- Access to communal gardens

13 Wetherby Gardens,

APPROX. GROSS INTERNAL AREA *
922 Ft² - 85.65 M²



This floorplan is GUIDANCE ONLY and NOT FOR VALUATION purposes.



PRICE: £2,350,000
TENURE: LEASEHOLD WITH SHARE OF FREEHOLD
GROSS INTERNAL AREA: 922 SQUARE FEET / 85.65 SQUARE METRES APPROXIMATELY
LOCAL AUTHORITY: THE ROYAL BOROUGH OF KENSINGTON AND CHELSEA

NB We wish to advise prospective purchasers that these sales particulars are believed to be correct but their accuracy is in no way guaranteed, nor do they form part of any contract. We have not carried out a detailed survey nor tested the services, appliances or specific fittings. Measurements are approximate, © FG Consultants Ltd June 2014

fgconsultants

020 7937 7787

www.fgconsultants.com

4 Pembroke Mews, London W8 6ER