



7 CRESSWELL GARDENS, SW5



A substantial house with magnificent proportions and immense charm.

This family home is wider than the average London house and has superb volumes and natural light. It also benefits from direct access to a terrace from the raised ground floor kitchen which in turn leads onto west facing communal gardens. The house has been featured in two 'House and Garden' articles.

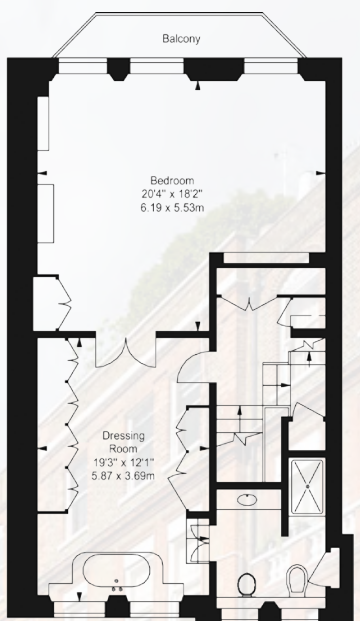
With the feel and tranquillity of a country house and the elegance and grandeur of an impressive London residence the house has glorious open west facing leafy views from the principal rooms over gardens and towards The Boltons. It is situated in a discreet South Kensington location within the desirable Bolton's Conservation area.

- Drawing room with west facing balcony
- Dining Room
- Kitchen/Family room leading onto terrace and communal gardens
- Study
- Master bedroom with en suite bathroom and dressing room
- Two bedrooms with en suite bathrooms
- Three further bedrooms
- Two further shower rooms
- Gym
- Utility room
- West facing terrace
- Direct access to west facing communal gardens
- Separate street access to the lower ground floor
- Two storage vaults

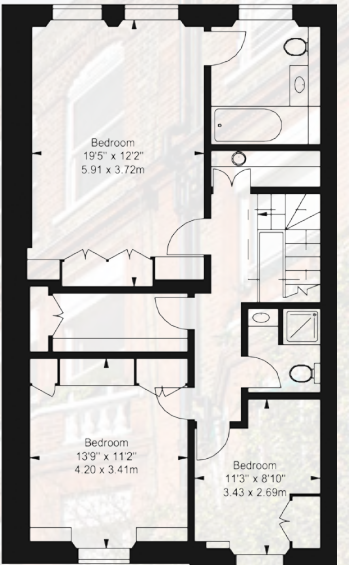




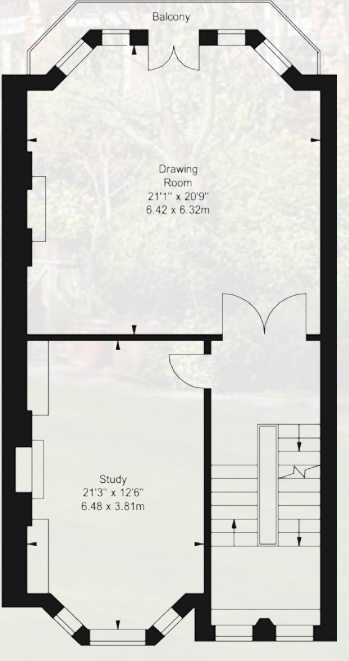
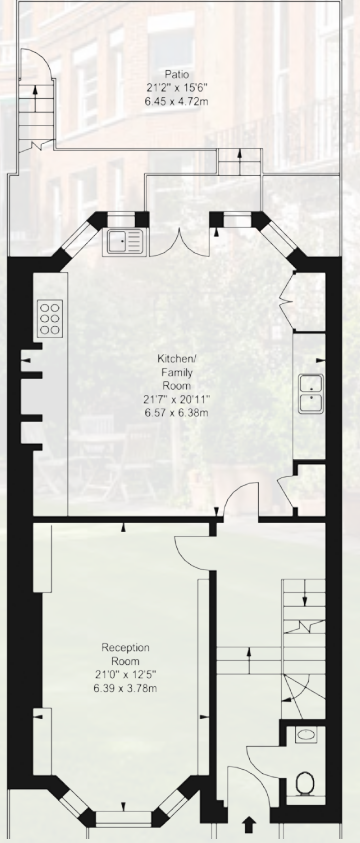
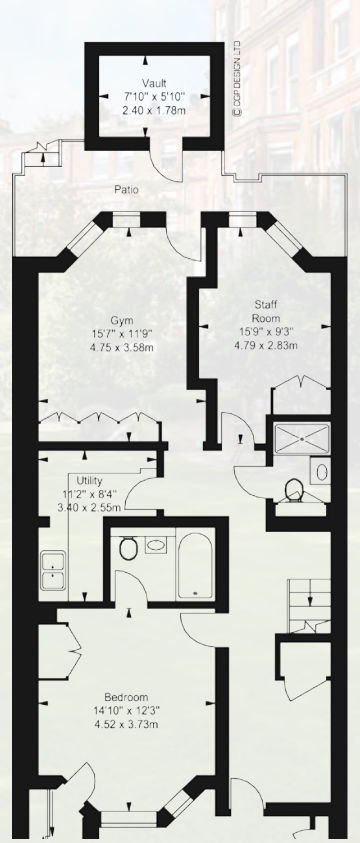
First Floor
Half Landing



Second Floor



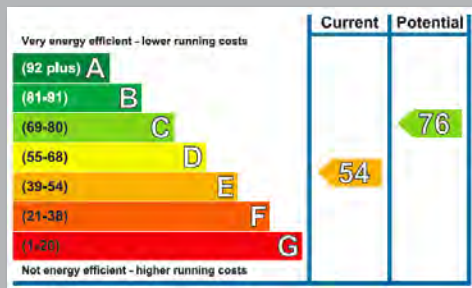
Third Floor



Gross Internal Area

4266 sq ft / 396.3 sq m 9 (Including Vaults)

Vaults 79 sq ft / 7.3 sq m



Terms

Tenure

Freehold

Price

£9,500,000

fgconsultants

020 7937 7787

www.fgconsultants.com

4 Pembroke Mews, London W8 6ER