

DRAYTON GARDENS

CHELSEA SW10





A most elegant flat located on the first floor of this sought after red brick mansion block with lift and caretaker. The flat has excellent entertaining space throughout and of particular note is the substantial master bedroom suite and panelled library. Both aspects, east and west, overlook greenery providing privacy and and a sense of sanctuary. The home has featured in many critically acclaimed interior design publications over the last 25 years.



Tenure
Share of Freehold

Service Charge
Approximately
£11,409.78 per annum

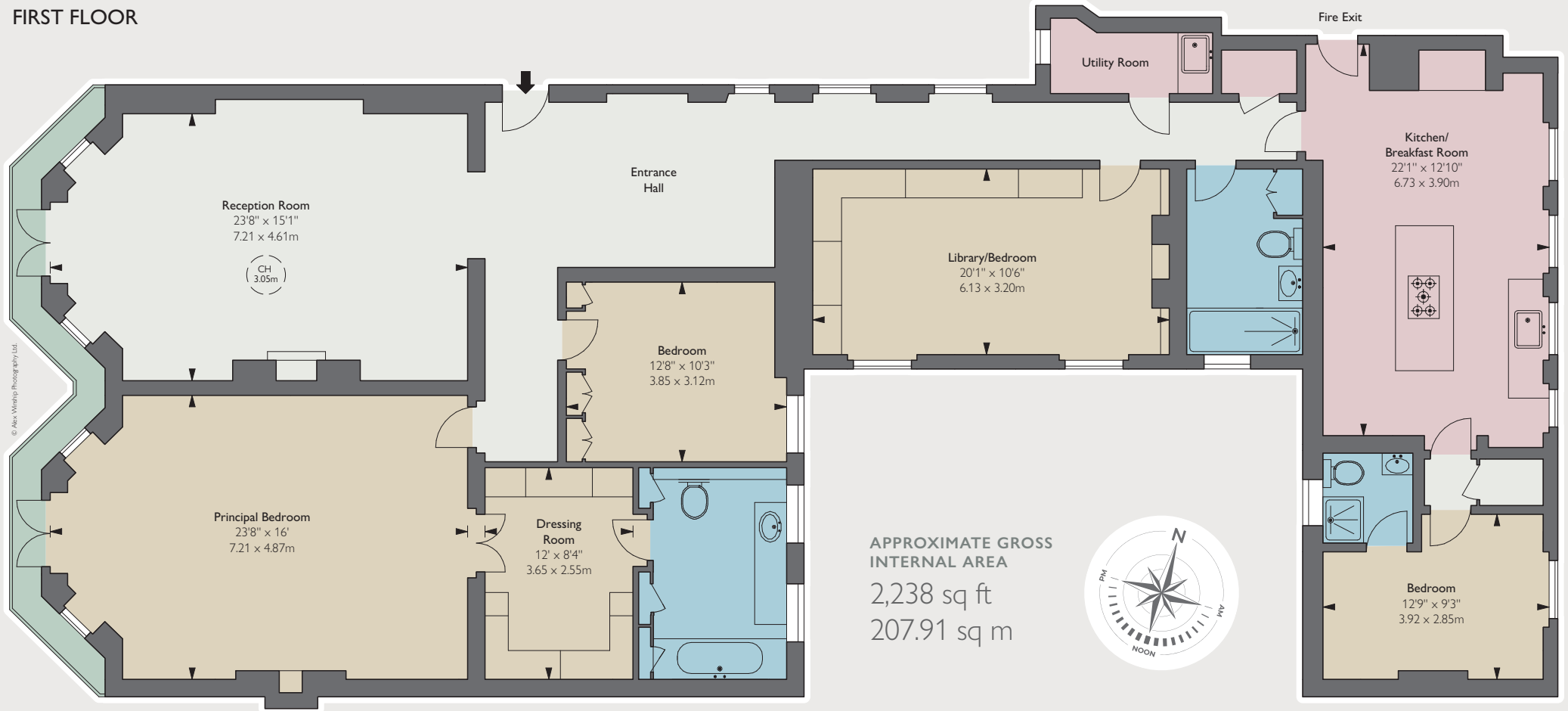
Price

Local Authority
The Royal Borough of
Kensington & Chelsea

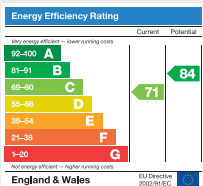




FIRST FLOOR



© Alex Winship Photography Ltd.



These particulars are for general information only and do not constitute any part of an offer or contract. All statements contained herein are made without responsibility on the part of the vendors or lessors and are not to be relied upon as statement or representation of fact. Intending purchasers or lessees must satisfy themselves, by inspection, or otherwise, as to the correctness of each of the statements or dimensions contained in these particulars. These details are not an offer or contract, not part of one. Photographs taken May 2021. 05/10/21 FG-211004-02GG

Floorplan for guidance only, not to scale or valuations purposes. It must not be relied upon as a statement of fact. All measurements and areas are approximate and have been prepared in accordance with the current edition of the RICS Code of Measuring Practice.

fgconsultants

020 7937 7787

www.fgconsultants.com

4 Pembroke Mews, London W8 6ER