

ALL SAINTS ROAD

NOTTING HILL, W11







All Saints Road, W11

A superb lateral flat, flooded with light, on the first and second floor, located in this fashionable Notting Hill Street.

The flat has wonderful proportions and a roof terrace with sweeping views of over 1,300 square feet. It benefits from a private entrance that leads you into an extremely spacious reception room that covers the width of two buildings. The room has high ceilings and large windows to the front and a terrace to the rear. There is a guest cloakroom and utility room. The second floor has a master suite of bedroom, dressing area and en-suite bathroom. There are three further bedrooms and a family bathroom.

Accommodation and Amenities:

- Double reception room
- Large eat-in kitchen
- Master suite with dressing room and bathroom
- Three further bedrooms
- Large family bathroom
- Utility room
- Cloakroom
- Roof terrace
- Additional first floor terrace

All Saints Road, W11

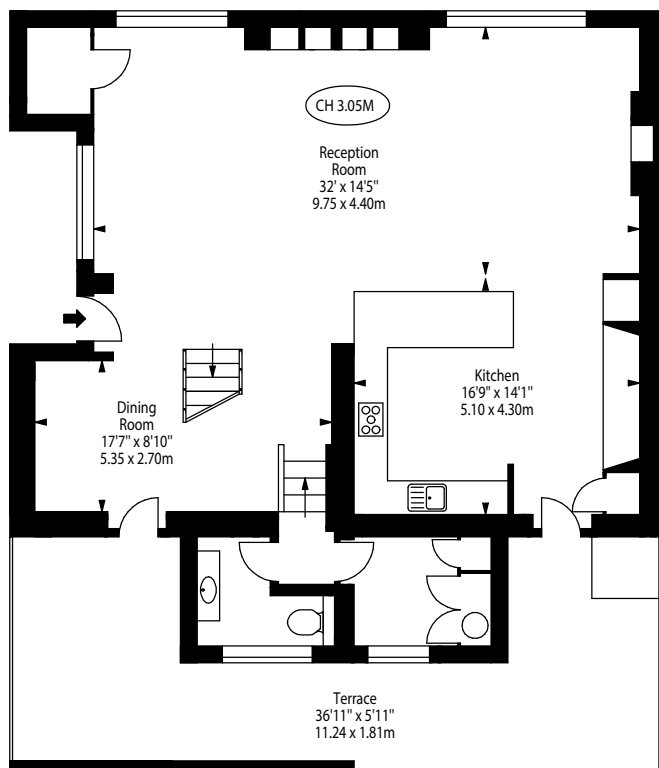
APPROX. GROSS INTERNAL AREA *
2301Ft² - 213.77 M²

TERRACES AREA *
1358 Ft² - 126.16 M²

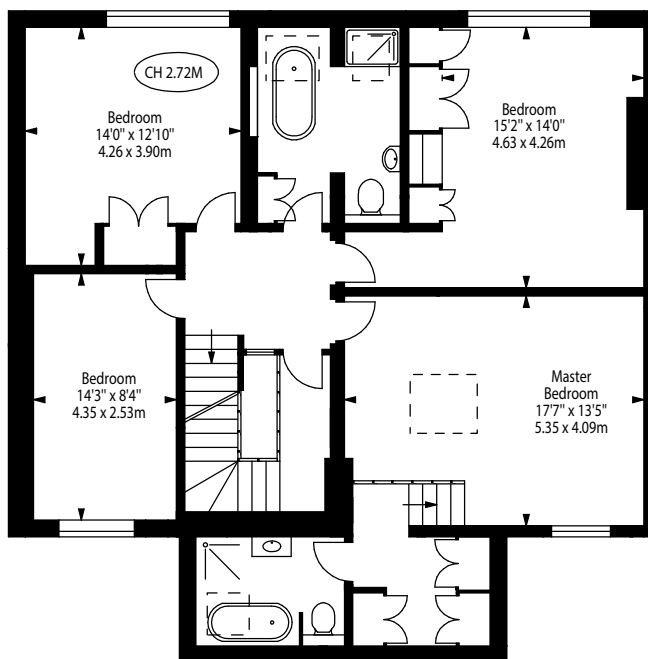


Key:
CH - Ceiling Height

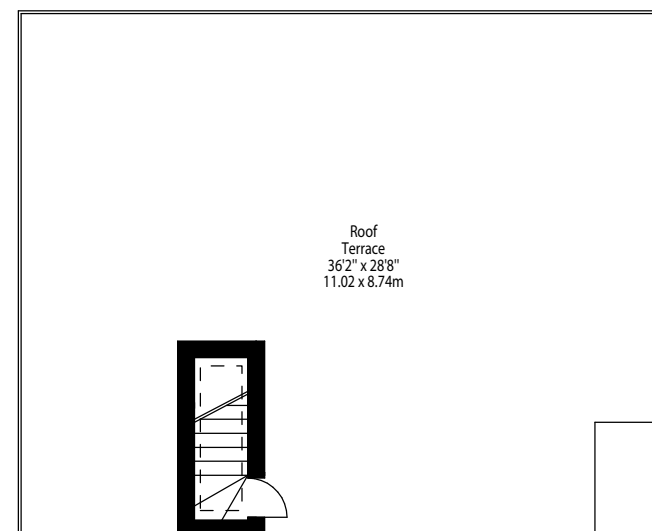
This floorplan is for GUIDANCE ONLY and NOT FOR VALUATION purposes.



FIRST FLOOR



SECOND FLOOR



TERRACE

PRICE: £3,650,000
 TENURE: LEASEHOLD, 987 YEARS REMAINING
 GROSS INTERNAL AREA: 2301 SQUARE FEET / 213.77 SQUARE METRES APPROXIMATELY
 OUTDOOR SPACE: 1358 SQUARE FEET / 126.16 SQUARE METRES APPROXIMATELY
 LOCAL AUTHORITY: THE ROYAL BOROUGH OF KENSINGTON & CHELSEA

NB We wish to advise prospective purchasers that these sales particulars are believed to be correct but their accuracy is in no way guaranteed, nor do they form part of any contract. We have not carried out a detailed survey nor tested the services, appliances or specific fittings. Measurements are approximate, © FG Consultants Ltd April 2018

fgconsultants

020 7937 7787

www.fgconsultants.com
 4 Pembroke Mews, London W8 6ER