



Wilton Place

BELGRAVIA SW1





An impressive six-bedroom freehold house located in this prime Prime Belgravia address

Set back from the road this house presents a wonderful opportunity for an incoming buyer to make their own mark. Flexible family living space on the ground floor leads up to an elegant first floor drawing room. There are five bedroom suites and a lower ground arrangement for staff / guest accommodation comprising a bedroom, bathroom, kitchen and sitting room.

The house is conveniently situated just opposite The Berkeley hotel and there are good transport links, Knightsbridge station being a short walk away.



- Entrance hall
- Drawing room
- Dining room
- Kitchen
- Study
- Principal bedroom with dressing area and bathroom en suite
- Four further bedrooms all with bathrooms en suite

- Lower ground floor with kitchen, two bedrooms and bathroom
- Media / Garden Room
- Cellar
- Vault
- Front garden
- Patio garden

TENURE
Freehold

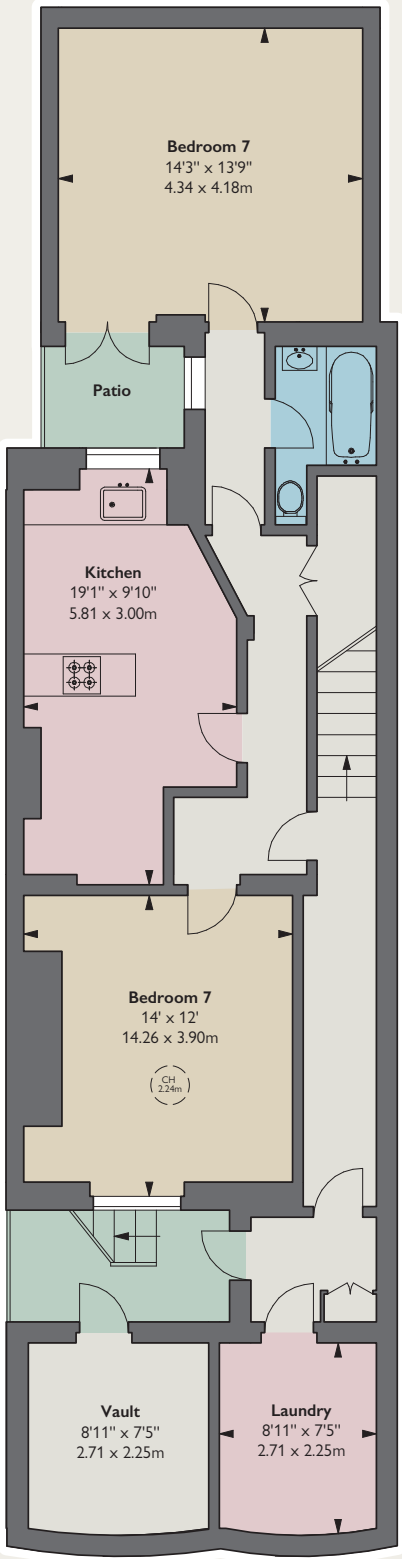
PRICE
£6,650,000

LOCAL AUTHORITY
City of Westminster

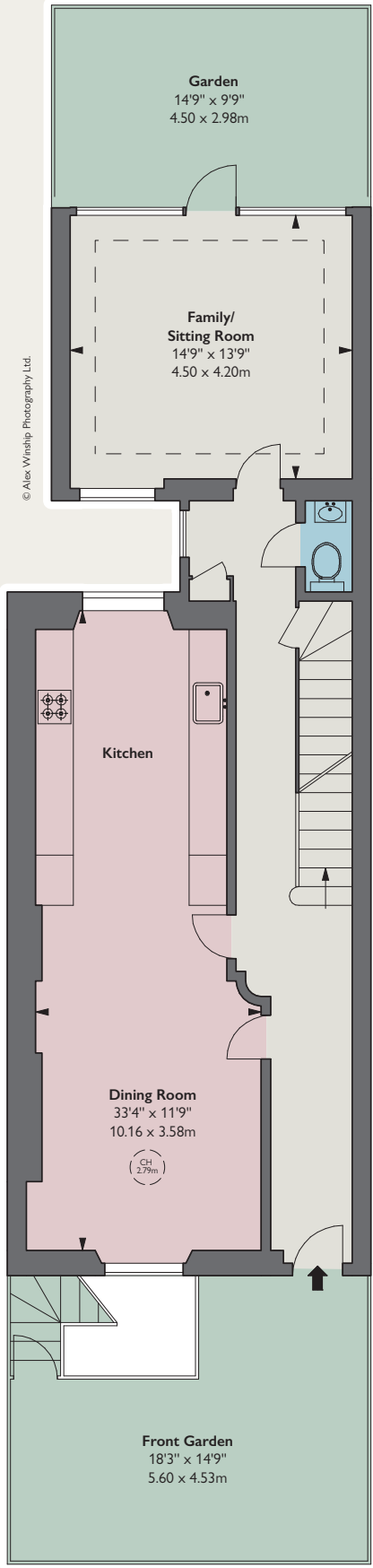
COUNCIL TAX
Band H



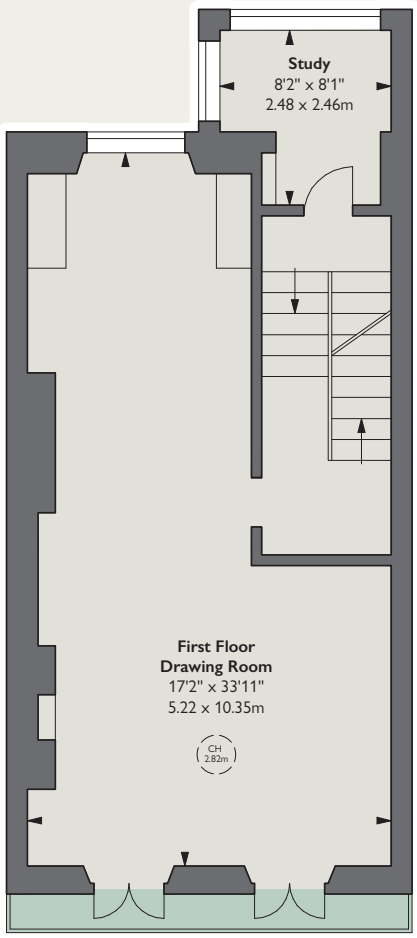




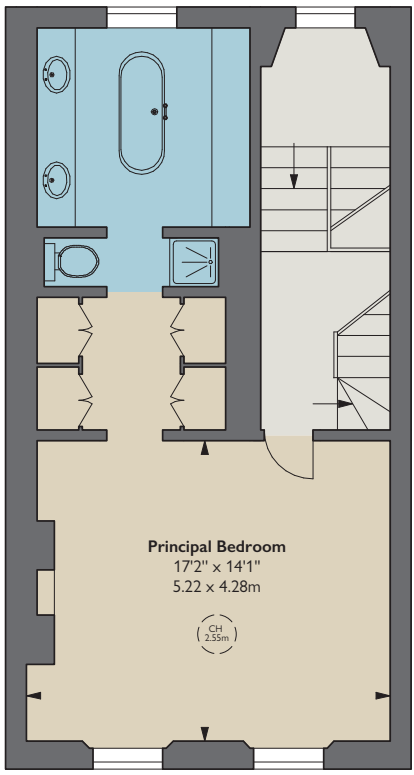
Lower Ground Floor



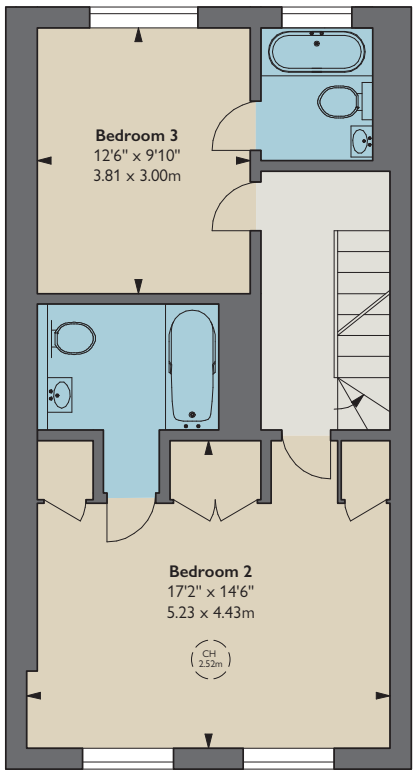
Ground Floor



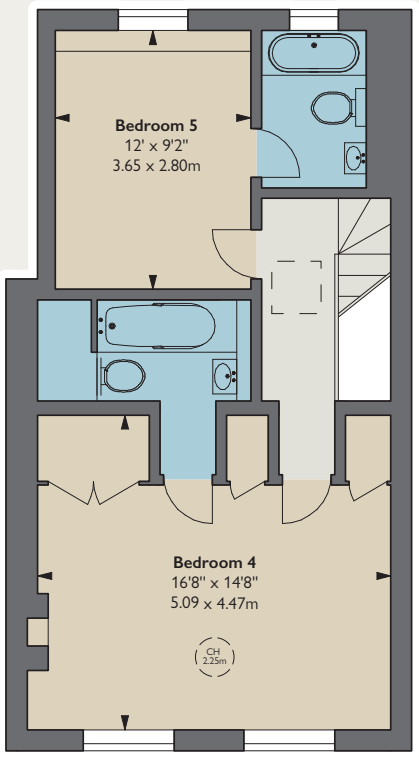
First Floor



Second Floor



Third Floor



Fourth Floor



APPROXIMATE GROSS INTERNAL AREA

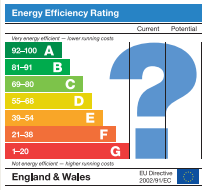
4,006 sq ft / 372.35 sq m

EXTERNAL VAULT

68 sq ft / 6.32 sq m

TOTAL

4,075 sq ft / 378.57 sq m



These particulars are for general information only and do not constitute any part of an offer or contract. All statements contained therein are made without responsibility on the part of the vendors or lessors and are not to be relied upon as statement or representation of fact. Intending purchasers or lessees must satisfy themselves, by inspection, or otherwise, as to the correctness of each of the statements or dimensions contained in these particulars. These details are not an offer or contract, not part of one. Photographs taken November 2022. 17/11/22 FG-221110-03GG

fgconsultants

020 7937 7787

www.fgconsultants.com
4 Pembroke Mews, London W8 6ER

THE
BROCHURY
ALEX
WINSHIP